

EST 1971

Positions

DANCE STUDIO

TUITION PLANS

2024-2025

Annual tuition is \$680.00. We offer an annual payment plan with a 10% discount for paying in full in advance. Otherwise, we offer the payment in 10 monthly installments for your convenience. A credit or debit card on file is the only accepted method of payment for monthly tuition.

Plan 1 - Annual Payment

Number of Classes Per Week	Cost
1	\$612
2	\$1224
3	\$1836
4	\$2448
5	\$3060
6	\$3672
7	\$4284
8	\$4896
9	\$5508
Unlimited	\$6120

Prices include 10% discount

Plan 2 - Monthly Installment

Number of Classes Per Week	Cost
1	\$68
2	\$134
3	\$198
4	\$260
5	\$320
6	\$380
7	\$440
8	\$500
9	\$560
Unlimited	\$620

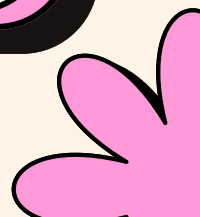
**30 Min Classes
(e.g. Pre Pointe)**
\$42/month

Misc. Costs

Annual Registration Fee - \$30 per family (paid with 1st month at time of enrollment)

Costume Fee - \$97.50 + 8.625% sales tax per costume (includes garment bag, tights, hair accessories, exchanges)

Please note, as per our policies, that if you drop a class after April 1, there is a \$60 drop-class fee, because your child's space has been held in that class for the entire year & for the recital.





SPECIAL PROGRAMS 2024-2025

We have two special programs at Positions that have special pricing separate from our regular tuition plans. These two programs require additional class time, extra rehearsals before shows, additional materials and props, and considerably more planning than our regular classes.

Broadway Bound Musical Theatre

75 minute class:
\$85/month

90 minute class:
\$98/month

Monthly fee includes:
Class that includes acting,
vocal, and dance instruction.
Scripts & other show materials
Extra rehearsals prior
to shows

*Broadway Bound classes
perform in a holiday show, a spring musical,
and the dance recital!*

Performance Team (Audition/Recommendation Only)

\$70 annual production fee
due with summer tuition

Prices by Team Requirements

Topaz - PT class + 1 class (ballet or jazz) =
\$144/mo (\$78 + \$66)

Ruby - PT class + 1 class (ballet or jazz) =
\$144/mo (\$78 + \$66)

Emerald - PT class + ballet + jazz =
\$212/mo (\$78 + \$134)

Sapphire - PT class + Conditioning +
Ballet + Jazz = \$263/mo
(\$78 + \$51 + \$134)

Diamond - PT class + Conditioning +
Ballet + Jazz = \$263/mo
(\$78 + \$51 + \$134)

****Please note:**
*Any additional classes PT students want to
take, outside of their required classes, are
subject to our regular tuition chart
on the first page***